

**CIRCULAIR  
BIOBASED  
CONSTRUCTION  
INDUSTRY**

# Interreg



# 2 Seas Mers Zeeën CBCI

European Regional Development Fund

## MOTIVATION TO START CBCI



Reference: ARUP & BAM 2017

CONSTRUCTION INDUSTRY IS A **LARGE CONSUMER** OF RESOURCES.

**30-50%** OF TOTAL MATERIALS USED IN EUROPE GOING TO CONSTRUCTION



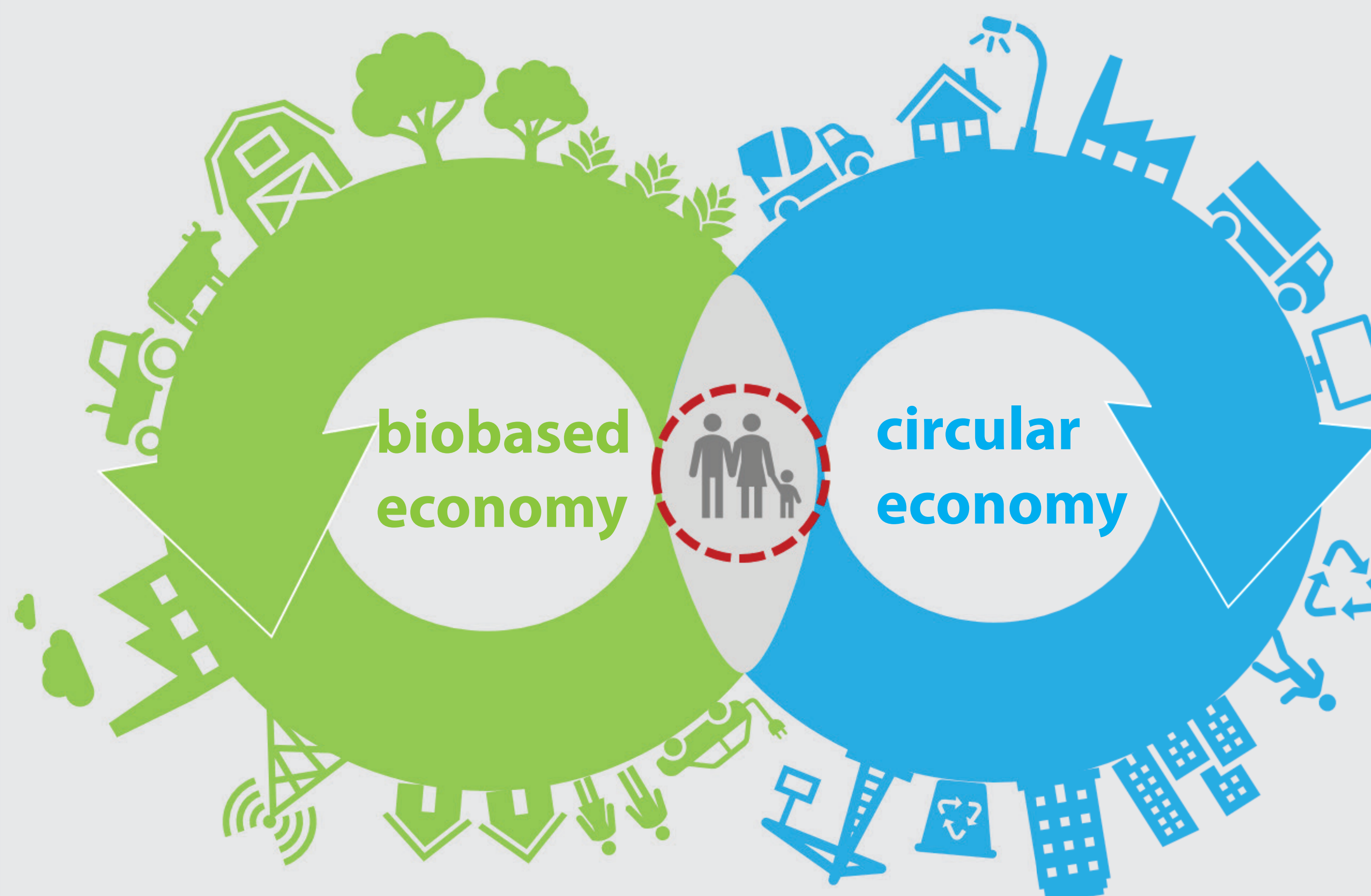
BETWEEN 2003-2011 APPROXIMATELY **1200-1800** MEGATON OF CONSTRUCTION MATERIALS WERE USED EARLY IN THE EU, EMITTING ANNUALLY **33%** OF TOTAL CO2 EMISSIONS.

MOST BUILDING PROJECTS ARE STILL DESIGNED IN A **LINEAR WAY**.



## COLLECT & DISASSEMBLE

**DECOMPOSITION**



**RECYCLING**

## PRODUCE & ASSEMBLE

Reference: [www.partnersforinnovation.com](http://www.partnersforinnovation.com)

**LEAD PARTNER:**  
**avans** UNIVERSITY OF APPLIED SCIENCES

**PROJECT PARTNERS:**  
KAMP C - UNIVERSITY OF BATH - EMERGIS  
BELGIAN BUILDING RESEARCH INSTITUTE  
AGRODOME - FLEMISCH CONSTRUCTION CONFEDERATION  
KU LEUVEN - PROVINCE OF ZEELAND  
HZ UNIVERSITY OF APPLIED SCIENCES